

# ECUBE 15 EX

*Confident Diagnosis, Confident Decisions  
For Women's Health*

## Expandable Field of View: Max. 230°

**EV3-10X** and **EC3-10X** which are extreme high density endovaginal transducers providing the world-widest angle of FOV, Max 230°, have great values in the diagnosis of early first trimester and gynecological exams. Clinicians can diagnose patients in confidence and make confident decisions based on the better understanding of anatomy in one wide view of transverse and longitudinal views of female genital organs. In addition, with the small head, 10mm, and high resolution image, the transducers can detect the more fine detail of organs.

Reducing the movement of transducers with the ergonomic design of small tip and the high imaging technology of wide FOV, **EV3-10X** and **EC3-10X** enable patients feel more comfortable during the diagnosis procedure.

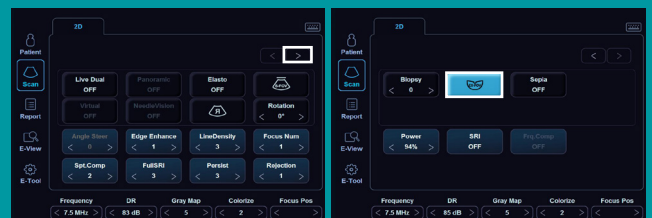


## Optimized transducers for your daily gynecological practice

### Benefits of Extended FOV

- ▶ More anatomical information in a single view of entire female genital organs
- ▶ Visualization of symmetry transverse plane of uterus and ovaries
- ▶ Measurement of the ovary and uterus volume size in abnormal
- ▶ Minimized procedure time and patients discomfort

### How to get 230° FOV imaging

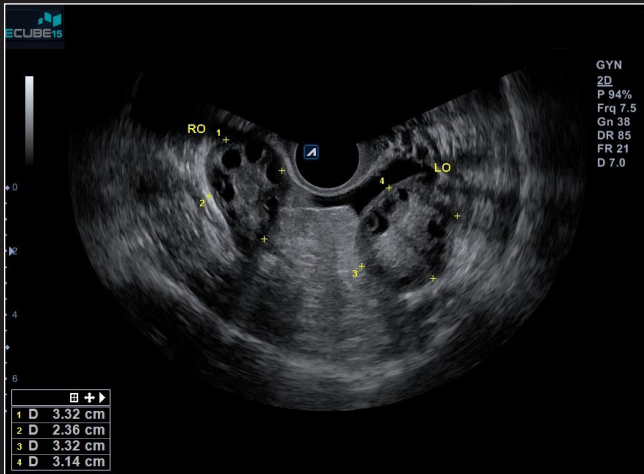


[Step 1]

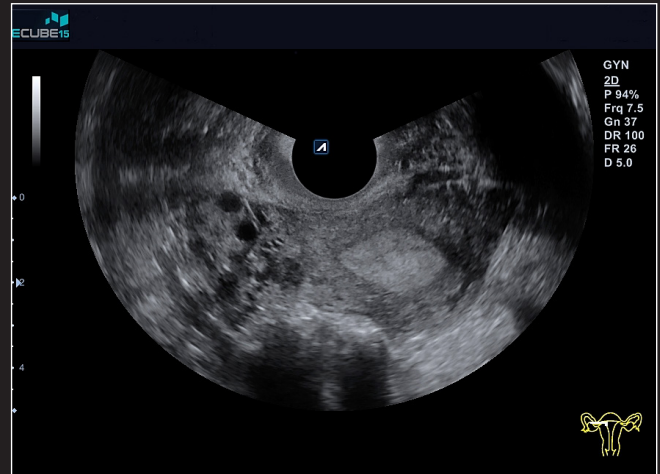
[Step 2]

**Step 1.** Press the arrow button to move to the next page.  
**Step 2.** Press the EX-FOV button on the touchscreen to change the FOV to 230°. (Default: 202°)

# Clinical Images



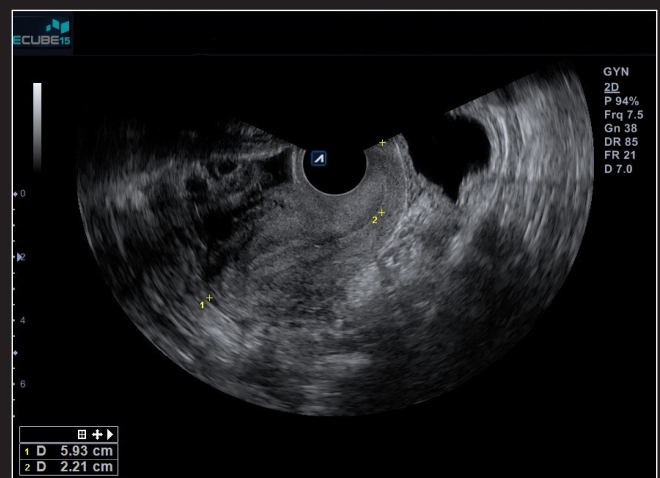
Transverse view of the uterus including left-right ovaries



Transverse view of uterus and right ovary with thick endometrium





Longitudinal view of uterus with cystic lesion



Longitudinal view from the cervix to the fundus of uterus

## Transducers Specifications

Transducers	Elements	Bandwidth	Handle	FOV	Footprint	Biopsy
 <p>EV3-10X</p>	High density 256 elements	3-10 MHz	Bent type	Default: 202° Max. 230°	21.5 x 18.6mm	Available
 <p>EC3-10X</p>	High density 256 elements	3-10 MHz	Straight type	Default: 202° Max. 230°	21.5 x 18.6mm	Available

### ALPINION MEDICAL SYSTEMS

Verdi Tower, 72, Digital-ro 26-gil, Guro-gu, Seoul, 08393, Korea / [Homepage www.alpinion.com](http://www.alpinion.com) / [E-mail international@alpinion.com](mailto:international@alpinion.com) / TEL +82-2-3282-0900 / FAX +82-2-851-5591

Copyright©2017 ALPINION MEDICAL SYSTEMS Co., Ltd. All rights reserved.

Standalone clinical images may have been cropped to better visualize pathology.  
Catalogue contents may change without prior notice to customers due to performance enhancements.

MKT-E15-OBG-LF-E1705-V3.2